

PLEASE CHECK WWW.MOLEX.COM FOR LATEST PART INFORMATION

Part Number: **0191930209**
Status: **Active**
Description: VersaKrimp™ Ring Tongue Terminal for 6 AWG Wire

Documents:

[Drawing \(PDF\)](#) [RoHS Certificate of Compliance \(PDF\)](#)

Agency Certification

CSA LR18689
 UL E32244

General

Product Family Ring and Spade Terminals
 Series [19193](#)
 Crimp Quality Equipment Yes
 Mil-Spec N/A
 Product Name VersaKrimp™
 Type Ring

Physical

Barrel Type Closed - Brazed
 Insulation None
 Material - Plating Mating Tin
 Packaging Type Bag
 Plating min: Mating (µin) 100
 Plating min: Mating (µm) 2.5
 Plating min: Termination (µin) 100
 Plating min: Termination (µm) 2.5
 Stud Size 10 (M5)
 Termination Interface: Style Crimp or Compression
 Wire Size AWG 6

Material Info

Old Part Number E-357-10

Reference - Drawing Numbers

Sales Drawing SD-19193-015



image - Reference only

Series

EU RoHS

ELV and RoHS Compliant
REACH SVHC Contains SVHC: No
Halogen-Free Status

China RoHS



Need more information on product environmental compliance?

Email productcompliance@molex.com
 For a multiple part number RoHS Certificate of Compliance, [click here](#)

Please visit the [Contact Us](#) section for any non-product compliance questions.

Search Parts in this Series

[19193Series](#)

Application Tooling | [FAQ](#)

Tooling specifications and manuals are found by selecting the products below. Crimp Height Specifications are then contained in the Application Tooling Specification document.

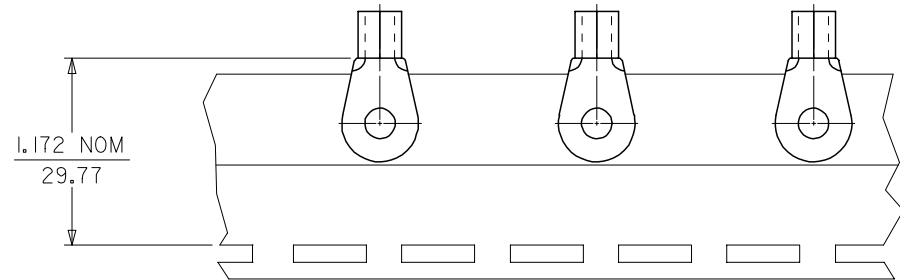
Global

| Description | Product # |
|---|----------------------------|
| Putt Pump Dieless Head System | 0192860065 |
| Manual Putt Pump Hydraulic System, Die set required | 0192860117 |
| Die Set (large) for the HHLS Hydraulic Crimper | 0192900004 |
| Hand Crimp Tool | 0640013900 |
| Crimp Head for the AT-200™ Pneumatic Hand Tool | 0640074300 |

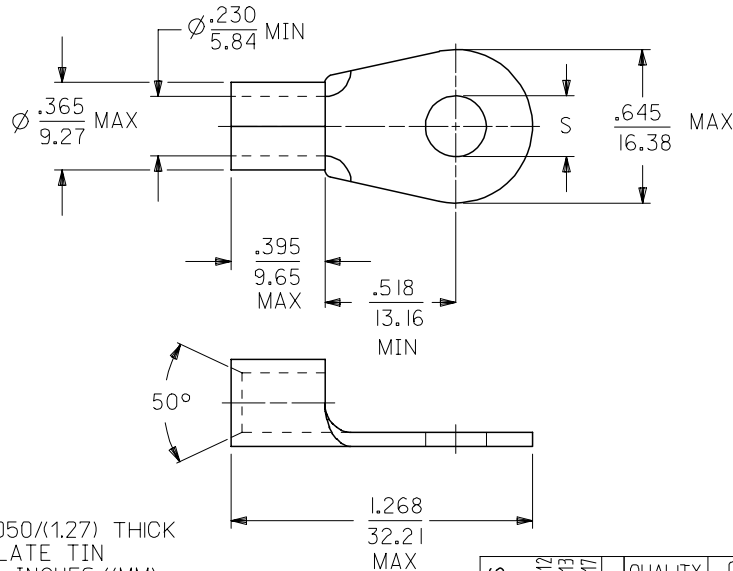
This document was generated on 04/14/2010

PLEASE CHECK WWW.MOLEX.COM FOR LATEST PART INFORMATION

| MATERIAL NUMBER | ENGINEERING NUMBER | STUD SIZE | "S" | PACKAGING |
|-----------------|--------------------|-----------|--------------|-----------------|
| 191930206 | E-357-08 | 8 | .173/(4.39) | LOOSE PIECE |
| 191930209 | E-357-10 | 10 | .198/(5.02) | |
| 191930212 | E-357-14 | 1/4 | .265/(6.73) | |
| 191930219 | E-357-56 | 5/16 | .328/(8.33) | |
| 191930216 | E-357-38 | 3/8 | .390/(9.90) | |
| 191930223 | E-357-76 | 7/16 | .453/(11.50) | TAPE MOUNTED |
| 191930208 | E-357-08T | 8 | .173/(4.39) | |
| 191930211 | E-357-10T | 10 | .198/(5.02) | |
| 191930215 | E-357-14T | 1/4 | .265/(6.73) | |
| 191930222 | E-357-56T | 5/16 | .328/(8.33) | |
| 191930218 | E-357-38T | 3/8 | .390/(9.90) | |
| 191930224 | E-357-76T | 7/16 | .453/(11.50) | |



PARTS ON TAPE
DOUBLE SPACED AS SHOWN



- NOTE(S):
- 1. MATERIAL: COPPER .050/(1.27) THICK
 - 2. PLATING: ELECTROPLATE TIN
 - 3. ALL DIMENSIONS IN INCHES/(MM).
 - 4. WIRE SIZE: 6 AWG
16 MM²
 - 5. PART IS ROHS COMPLIANT.

SALES DRAWING

| | | | | | | | | | |
|---|-------------------------------|--|-----------------------|------------------------------------|------------------------------|---------------------------------|--|--|--|
| REVISED MATL THKNS EC NO: ETC2007-0011 DRW: NEHLE 2006/07/12 CHKD: JMACNEIL 2006/07/13 APPR: RDOERSS 2006/07/17 | QUALITY SYMBOLS ▽=0 ▽=0 | GENERAL TOLERANCES (UNLESS SPECIFIED) | | DIMENSION STYLE IN/MM | SCALE --- | DESIGN UNITS INCH | THIRD ANGLE PROJECTION | | |
| | | | | mm | INCH | DRAWN BY DATE EDB 2000/11/01 | | | |
| | | 4 PLACES ± --- ± --- | 3 PLACES ± --- ± .005 | CHECKED BY DATE HEB 2000/11/01 | | | TITLE RING TONGUE TERMINAL VERSAKRIMP 6 AWG | | |
| | | 2 PLACES ± 0.13 ± .01 | 1 PLACE ± 0.25 ± --- | APPROVED BY DATE RWD 2000/11/01 | | | | | |
| ANGULAR ±1/2° | | DRAFT WHERE APPLICABLE MUST REMAIN WITHIN DIMENSIONS | | MATERIAL NO. SEE CHART | DOCUMENT NO. SD-19193-015 | SHEET NO. 1 OF 1 | | | |
| THIS DRAWING CONTAINS INFORMATION THAT IS PROPRIETARY TO MOLEX INCORPORATED AND SHOULD NOT BE USED WITHOUT WRITTEN PERMISSION | | | | | | | | | |